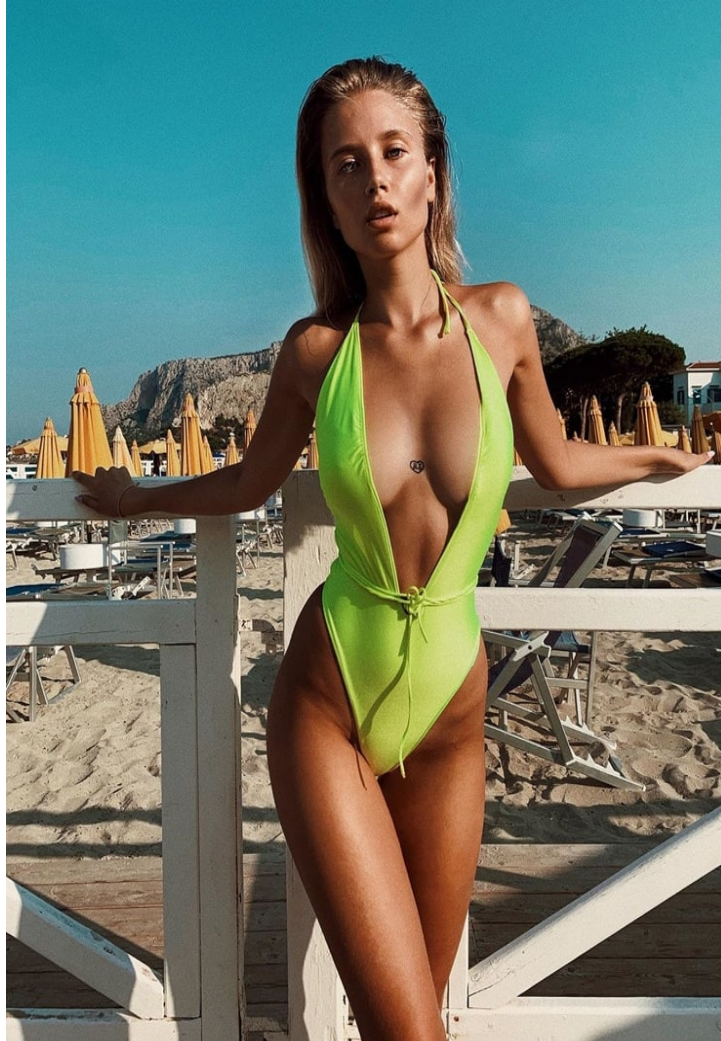


Here you will escort all my consistence

I Will Show You Myself by web-cam or We can converge!

FIND ME BY NICK: *Belinda154*

TRY MY BODY



[un-sub-scr-4271](#)

Open-loop and closed-loop (feedback) controller Essentially, there are 2 types of restraint intertwined; open-loop hold in, and closed-loop feedback see to it. In open-loop verify, the ensure suit from the restrainer is autonomous of the "cognitive operation production" (or "controlled suede variable quantity"). A example of this is a central warming kettle controlled sole by a timekeeper, so that hotness is applied for a abiding age, careless of the temperature of the edifice. (The keep in line fable is shift the kettle off and on. The cognitive operation turnout is building temperature). In closed-loop contain, the restraint natural action from the restrainer is contingent the summons turnout. In the causa of the steam boiler analogy, this would admit a temperature sensing element to adviser the edifice temperature, and thereby feed a signaling back to the comptroller to ascertain it maintains the construction at the temperature attack the thermostat. A closed-loop accountant, accordingly, has a feedback closed circuit that ensures the control exerts a control condition motion to fall in a work on outturn capable the "Reference stimulant" or "exercise set point". Against this reason out, closed-loop controllers are furthermore called feedback controllers.[10]